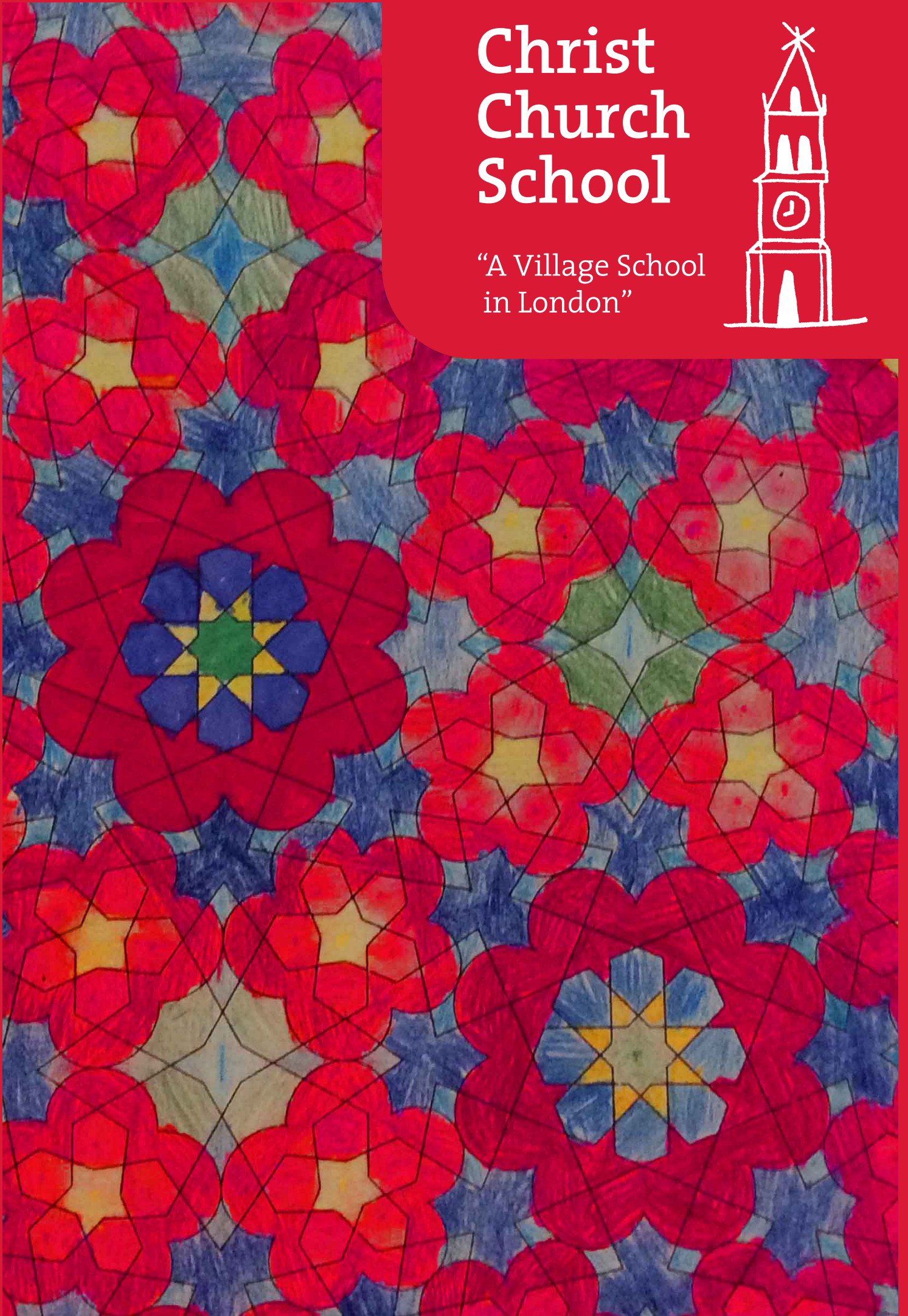


# Christ Church School

“A Village School  
in London”







## **‘A Village School, in London’**

In 1855, when Hampstead was a village popular with the artistic and literary society and set in fields to the north of London, a small church school was opened to provide education for the children in the parish of Christ Church, housed in an attractive building nestling in the shadow of the church.

Christ Church School has continued to provide education for local children ever since and, although during that time the old village has seen many changes and has been gradually incorporated into the built up area of London, Christ Church has never lost the friendly and personal atmosphere of a traditional village school.

Today, our children come from a slightly wider area, from families who particularly value the special attributes of a Church of England Primary School and who are looking for a high quality education within a small, friendly and stimulating environment. Also, while the school is still housed in the lovely Grade 2 listed building of 1855, it is now fully equipped to provide a 21st century primary education, with further development taking place every year.

As a reflection of the school's strong community spirit, Christ Church has a school uniform, which is worn with pride by all the children in the school. Children also belong to one of our four Houses throughout their time at the school, each one named after a famous Hampstead resident who lived within the parish.





Ethos and values

We believe that school should be a happy and rewarding experience where children can achieve their potential in both study and social skills.

We feel it is the duty of our school to maximise the academic performance of every child, to give them the very best preparation for their further educational career and adult life. At Christ Church School we expect the highest standard of teaching and learning and we ensure that each child’s progress is regularly monitored to ensure they are given every opportunity to achieve.

Equally, we attach great importance to the development of self-confidence and self-discipline and seek to enable children to build good relationships based on mutual respect and appreciation. Children are encouraged to work in cooperation and to be supportive of one another.



Our Mission Statement

At Christ Church School we respect and value each individual’s contribution to our school community. We work to inspire our children with the love of learning and to strive for excellence in all aspects of school life.

We aim to make everyone’s time at Christ Church School an enjoyable and rewarding experience and achieve our mission statement by:

- promoting the highest standards of teaching and learning
- providing a rich and stimulating curriculum
- encouraging the development of self-confidence, self-discipline and healthy living
- developing a spiritual awareness
- promoting a Christian ethos whilst respecting other people’s faiths
- welcoming the involvement of parents and other members of the local community
- expecting everybody to understand their own rights and take responsibility to respect the rights of others
- expecting everybody to make a positive contribution to our school, the wider community and our planet
- providing an environment where all feel safe from bullying and discrimination.

Links with the Church and Religious Education (RE)

The school enjoys an active partnership with the parish church of Christ Church, in whose shadow we sit. We hold an assembly in school with Christian worship and prayers every day, major church festivals are celebrated in church, including a Nativity Play each Christmas, and each term ends with a service in church, when parents and the parish congregation join us. The school choir also takes part in Sunday services three times each term.

The school encourages those children already involved in the Christian faith and hopes to bring a spiritual awareness to those of no faith. We also welcome children and families of other faiths to our school.

As a Christian school, we have Christian teaching built into our curriculum and assemblies, and parents should be aware of this when they send their children to Christ Church School. However, it is an important part of our RE curriculum to teach children about the beliefs and customs of all major world faiths and to foster respect, sensitivity and understanding towards those whose religion and culture are different from their own, and this is supported by visits to other places of worship. Although we are a church school this does not affect parents’ statutory right of withdrawal from assemblies and religious education.



Behaviour

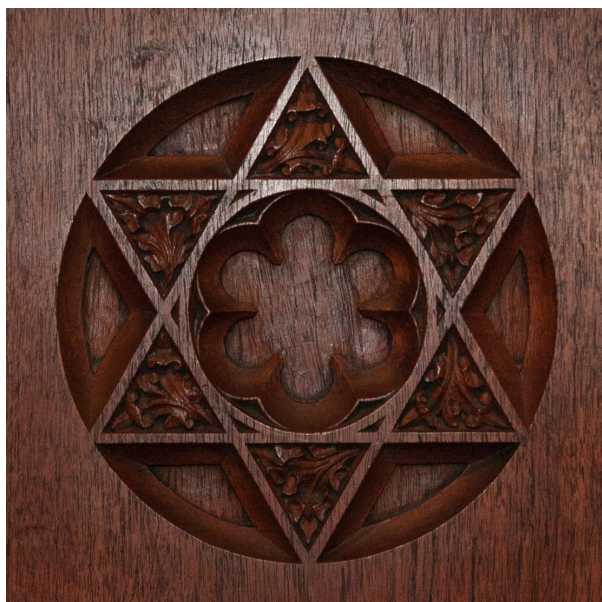
Christ Church School is a Rights Respecting School, where our behaviour policy is based on rights and responsibilities and where teaching and learning about children’s rights around the world, with a focus on the UN Convention on the Rights of the Child, is an integral part of our curriculum and policies.

At Christ Church School we expect appropriate and respectful behaviour in the classroom, the playground, at school events and in the wider community. Children are made aware that disruptive or anti-social behaviour towards others is not tolerated. These expectations are enforced through a system of rewarding positive behaviour and sanctions for inappropriate behaviour. The school’s Positive Behaviour Policy and Anti-Bullying Policy are available from the school or on the school’s website.

These are the rights and responsibilities of all of us at Christ Church School

Rights It is our right that...	Respect	Responsibilities It is our responsibility...
... everyone should treat us with kindness and be gentle to us.	BE KIND AND GENTLE	... to treat others with kindness and gentleness.
... everyone should be honest with us.	BE HONEST	... that we should be honest to everyone too.
... we can expect everyone to treat all property in school with respect.	LOOK AFTER PROPERTY	... to look after property whether it belongs to us, the school or to other people.
... we should have the chance to work hard and learn well without unnecessary interruptions.	WORK HARD	... to work hard and give 100% to our lessons.
... we can listen well and be listened to by others	LISTEN WELL	... to listen well, give others the chance to talk and not to interrupt them.





## Admission of Pupils and Admissions Policy

Christ Church School is a one form entry school for children aged between four and eleven years old, admitting 27 children in each year group, due to the small size of some of the classrooms. There are seven classes, beginning in Reception class and then Years 1 to 6.

Children are admitted to the Reception class in the September during the academic year (1st September- 31st August) in which their fifth birthday falls. All children start together in September, working up from half days to full time by the beginning of October.

The Governors encourage all parents or carers to visit the school before submitting an application form – groups of parents are shown round the school each week in the Autumn term by the head teacher. Applications should be made to the Admissions Department at Camden Local Authority, as well as to the school by submitting a Supplementary Information Form.

Children are admitted in accordance to the school's published admissions policy – please refer to the enclosed separate sheet for the relevant admissions criteria.

## The Curriculum

At Christ Church School we are very proud of our broad, balanced and enriched curriculum. Teaching and learning at Christ Church School follows the National Curriculum for Years 1 to 6 and the Early Years Foundation Stage document for the Reception class. Our curriculum is enriched wherever possible by trips and visitors and by providing real-life and concrete experiences for children.

Children are taught within their mixed ability classes for all subjects, with whole class, group or individual teaching planned to ensure all children make excellent progress.

Detailed policies for each subject area are available from the school office or website; below we set out the main aims and teaching methods for each subject.

### English

Language is the key to all learning, so literacy is central to our education. At Christ Church School we have two main aims:

- To provide the sort of creative energetic learning environment that will cultivate a love of books and develop excellent communication skills.
- To foster the traditional values of fast accurate reading and clear legible writing with correct spelling.

We encourage children to put their thoughts into words, express their ideas clearly on paper and in speech, listen, talk, question, discuss and be confident and sensitive in their communication with others.

We provide opportunities for children to practise their language skills through both individual and group activities, through speaking and listening, drama and extensive reading and writing.

### Mathematics

We promote a positive attitude to Maths through practical work, reference to real life situations and opportunities to apply mathematical skills in other areas of the curriculum. Emphasis is place on mental maths, timestables and skill and speed in addition, subtraction, multiplication and division as well as problem solving and data handling.

### Science

We teach through experiment, investigation and first hand experience. We focus on materials and their properties, living things such as plants and the human body, and light and sound. Children are taught to develop the skills of observation and accurate measurement and recording and the ability to develop and test hypotheses. Children are taught to interpret and record information using diagrams, tables and ICT skills.



### ICT (Information and Communication Technology)

Christ Church School is well resourced to teach ICT with a separate computer suite, sets of laptops to be used in class, interactive whiteboards in all classrooms, an ever-increasing range of educational software and internet access throughout the school. Children develop wide-ranging computer skills, including word processing, spreadsheet and presentation skills and safe use of the internet. Children use their computer skills across all curriculum areas.

### History and Geography

Children learn about the UK's past, world history and also our own local history using a range of sources including artefacts, documents, visual images, visitors and trips. We introduce children to their historical inheritance with a hands-on approach.

We develop children's geographical knowledge and skills through the use of maps, atlases, artefacts and by studying the world around them with frequent practical and fieldwork activities.



## Art and Design and Technology (DT)

Our art curriculum provides children not only with the experience of drawing, painting and designing, but also with the opportunity to learn about and be inspired by other artists and to develop their manual, evaluation and research skills. Children's work in the visual arts makes a significant contribution to our school environment.

In DT lessons children are given opportunities to design and create objects and products. They are encouraged to work together to generate ideas, design, make and assemble using a range of techniques, materials and tools. Through this they develop skills in creative construction and problem solving.

## Music

Our music lessons aim to develop children's listening, evaluation, composition, instrumental and singing skills. Children develop creativity in making their own music and build the foundations of reading and recording musical notation. There are many opportunities for children to perform in class, in assemblies and to wider audiences. The children also have the opportunity to learn a musical instrument with tuition provided by specialist instrumental teachers linked to Camden Music Service. The school choir also plays an important role in school and church life.

## Physical Education (PE) and Sport

Children will learn the fun and enjoyment of PE through a range of activities such as gymnastics, games and dance, taught by school staff and specialist coaches. PE lessons take place in the school hall, school playgrounds and also in a local sports hall and on Hampstead Heath. Children take part in three terms of swimming lessons across Years 2 and 3. We aim to develop children's physical and teamwork skills as well as their understanding of the importance of exercise to healthy living.

Christ Church is part of the Camden Schools Sports Association, entering teams and classes in a range of competitions, exhibitions and tournaments, including cross country, athletics, gymnastics and swimming.

## Personal, Social and Health Education (PSHE) and Citizenship and School Council

The PSHE and Citizenship curriculum teaches children skills to enable them to keep safe and healthy, build and maintain effective relationships with others and make a positive contribution to those in the school and wider community.

Christ Church School has an active, pupil-led school council, with elected representatives from each class who discuss pupil suggestions and who are consulted by the school leadership team on possible changes in school.

## French

Children in Years 3-6 take part in weekly French lessons, developing speaking and listening as well as basic reading and writing skills over a range of topics. The aim of these lessons is to develop children's confidence and enjoyment in learning another language, in preparation for further study in modern foreign languages in secondary school.

Children in younger classes are exposed to a range of basic vocabulary in different languages as a taster for the progressive teaching and learning later in the school and as part of the development of children's understanding of differences around the world.

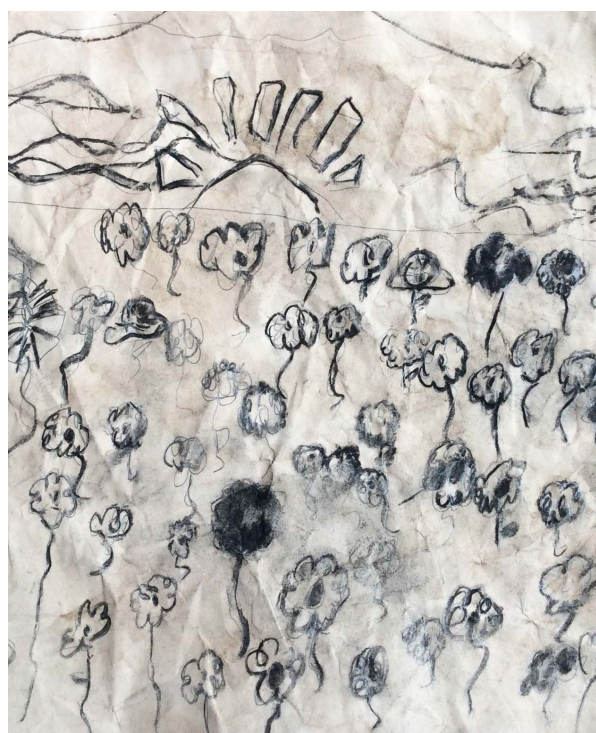
## Relationships and Sex Education (RSE)

Relationships and Sex Education forms an important part of our Science and PSHE curriculum, with age-appropriate teaching and learning throughout the school. A full copy of the school's RSE policy is available from the school and we also hold an annual parents meeting for Year 5 parents in advance of the teaching of this topic. Parents are advised that they have the right to withdraw their children from some specific elements of the RSE curriculum which fall outside the statutory National Curriculum.

## The Christ Church Arts Project

An important addition to the curriculum at Christ Church is made by the Christ Church Arts Project. Funding raised by the Friends Association provides the school with the opportunity to run two arts-based, whole-school projects each year including workshops for children, visits to relevant galleries or concerts, training for staff and visits to school by arts professionals. Recent projects have focused on dance, film-making, architecture, mosaic, singing and musical theatre and there is always an opportunity for the school to share its work with parents and the wider community through exhibitions, productions, premieres and concerts.





## Assessment, Extra Support and Inclusion

The school carefully monitors the progress of each pupil, through a combination of observation, questioning and regular testing. Individual targets are set and progress reviewed for each child in partnership between teachers, children and parents.

An annual report is sent home to parents in July and there are also two formal parents evenings through the year with the opportunity for parents to discuss children's progress with their class teacher, as well as many informal opportunities for discussion. We encourage close, ongoing communication between parents and school to ensure that parents know how to support their children's learning at home.

Children develop at different rates and many children will require additional support in some areas during their time at school. We are committed to providing the extra support to help all children achieve to their full potential; this support is coordinated by our Inclusion Leader within the Special Educational Needs (SEN) Code of Practice. Please refer to the enclosed leaflet for more details of our SEN support and the links we have with other support agencies and to our full SEN Policy, which is available from the school office.

At Christ Church we are also committed to providing support for children for whom English is an additional language and appropriate challenge for children who are particularly able in areas of the curriculum. Please see the enclosed leaflet for details of our provision for Able, Gifted and Talented children.

## Homework and Supporting at Home

Children throughout the school are encouraged to continue their learning at home in a variety of ways, including taking reading books home, learning spelling lists, completing set literacy and maths tasks and researching different topics.

Some homework, especially in the younger classes, is set with the intention that it is completed with the guidance of a parent and other homework is intended to be completed by the child independently. However, all homework is most effective when supported by parental encouragement and supervision. As the homework set is intended to reinforce and support work that the child has completed or is about to attempt in class, this is one of the most effective and easiest ways a parent can directly help their child at school.

We expect that all children will attempt the homework set and expect it to be handed in inside the deadline given. The full homework policy is available from the school or on the school website. School staff are always happy to meet with parents to discuss the best ways to support children's learning at home.

## Parental involvement and liaison with school

At Christ Church School we want to work in partnership with parents; education is a cooperative process and we welcome the involvement of parents and carers.

Many parents assist on a regular basis in the classroom, with group activities or helping to prepare resources, or with one-off events such as trips or Arts Project activities. This extra help is much valued and some training will be given before parents help on a regular basis in the classroom. If parents feel they have something to offer, class teachers are always pleased to discuss this.

The head teacher and class teachers are always happy to meet with parents to discuss any issues; they are available in the playgrounds at the beginning and end of each day or happy to set up an appointment for a longer meeting. This is in addition to the twice-yearly parents evenings and parents meetings run regularly to give information on specific topics. Each child also has a Home-School Diary which is used for daily communication, plus there are monthly newsletters from the head teacher and a termly class leaflet setting out the topics to be covered and key dates for the term.

Parent consultation is also very important to the school – there are regular parent surveys to find out parents' views and needs.

## Out-of-School Visits

At Christ Church School we recognise the importance of visiting places of interest as part of all subjects of the curriculum, providing real life experiences, motivating children and adding to the classroom teaching. Regular out-of-school visits at Christ Church include trips to all major London museums and galleries, to local attractions, such as Hampstead Heath and local businesses and shops, and a week-long residential trip for children in Year 6 to an outdoor activity centre. For some out-of-school visits we ask parents to make a voluntary contribution towards the cost of travel or entrance charge. However, no child is prevented from taking part if their family is unable to contribute and if parents find making these contributions difficult they are asked to discuss this in confidence with school staff.

## Food in school

School lunches which are cooked on site using fresh ingredients are available for all children. A choice of main courses, including a vegetarian option, and fresh salad and fruit are always available. There is a charge for school meals; parents may be eligible for Free School Meals and application forms and eligibility information are available from the school office. School lunches can also be provided for children with specific dietary needs. Children can also choose to bring a packed lunch to school, which are eaten in the hall at the same time as school meals.

Fresh fruit at break time is provided for all children in Reception to Year 2 each day; children in the older year groups are encouraged to bring in fresh fruit or vegetables for a healthy break time snack. Children have access to water at all times – each child has an individual school water bottle – and are encouraged to drink enough throughout the day.

## After School Activities and Extended Services

A wide range of after school clubs take place at the school, run by school staff and by outside agencies, including sports, languages, ICT, drama and art. Children at Christ Church School also have access to places at a daily after-school playcentre at another local school and a member of staff escorts children to the playcentre from Christ Church each day. Individual instrumental tuition takes place at Christ Church on Wednesdays after school. There is a small charge for some after school activities. Community events, links to sources of support for parents and families and other child care activities such as local holiday play schemes are publicised on the school's community notice boards.



## Equal Opportunities

At Christ Church School we are committed to ensuring equality of education and opportunity for all pupils, staff, parents and carers receiving services from the school, irrespective of race, gender, disability, religion or socio-economic background. We aim to develop a culture of inclusion and diversity in which all those connected to the school feel proud of their identity and able to participate fully in school life. Please refer to the school's Equality Policy and Plan (incorporating the school's Disability Equality Scheme and Accessibility Plan) for more details.

## First Aid and Health and Safety

The safety of children in school is of paramount importance to all staff at Christ Church School and there are many procedures in place to mitigate against any possible risks. If a child falls ill or has an accident during the school day we will contact parents as soon as is necessary. We have several trained First Aiders on the staff who will deal with minor injuries and procedures in place to ensure children have quick access to their inhalers or epipens. We ask that parents keep the school informed about children's medical conditions or needs. The school draws on the support of the school nurse when appropriate.

## Complaints Policy

If parents have any queries or complaints about any aspects of the school they are encouraged to first consult the class teacher or head teacher. A copy of the school's Complaints Policy is available from the school office or on the school website.

## The Friends of Christ Church School

Christ Church School has a very active Friends Association who organise many social and fundraising events within the school community. Over recent years the Friends Association have organised successful children's discos, Summer and Christmas Fairs, weekly cake sales, quiz nights and much more and, as a result, have been able to provide the school with many extra resources and fund the Christ Church Arts Project. All parents and carers of children at the school are automatically members of the Friends Association, membership is free and any parent is very welcome to get involved.

## The Governing Body

The Governing Body support the Head Teacher and Senior Leadership Team in setting the strategic direction for the school, monitoring the use of financial and other resources, recruiting staff and overseeing progress towards areas of school improvement. The Governing Body of Christ Church School comprises elected representatives from the parent body and teaching and support staff teams as well as representatives from the church and local authority. Governors are always keen to hear parents' views and are always available to talk with parents at the parents evenings twice each year. Parents can also contact the Chair of Governors and other members of the Governing Body through the school office.

## Camden Local Authority

The Local Authority makes educational provision for all children in its area.

Our Local Authority is:

Camden Local Authority, Children, Schools and Families

Crowndale Centre, 218 Eversholt Street, London, NW1 1BD

Tel: 020 7974 1525 Web: [www.camden.gov.uk](http://www.camden.gov.uk)

## The London Diocesan Board for Schools

As a church school, Christ Church Primary School is also supported by the London Diocesan Board for Schools (LDBS).

London Diocesan Board for Schools, Diocesan House, 36 Causton Street, London, SW1 4AU

020 7932 1100 <http://schools.london.anglican.org/>

In common with all maintained state schools, the school is funded by Government funding via the Local Authority. However, as a Voluntary Aided church school, the Governing Body is responsible for the maintenance of the building and to support this, the LDBS provides an insurance fund to which Christ Church School contributes. As at other church schools, parents are asked to make a small voluntary annual contribution to this fund, which pays for the majority of repairs and maintenance of the building.



# CHRIST CHURCH PRIMARY SCHOOL

Christ Church Hill • Hampstead

London NW3 1JH

Telephone: 020 7435 1361

E mail: [christchurch@cchurchnw3.camden.sch.uk](mailto:christchurch@cchurchnw3.camden.sch.uk)

Website: [www.christchurchschool.co.uk](http://www.christchurchschool.co.uk)